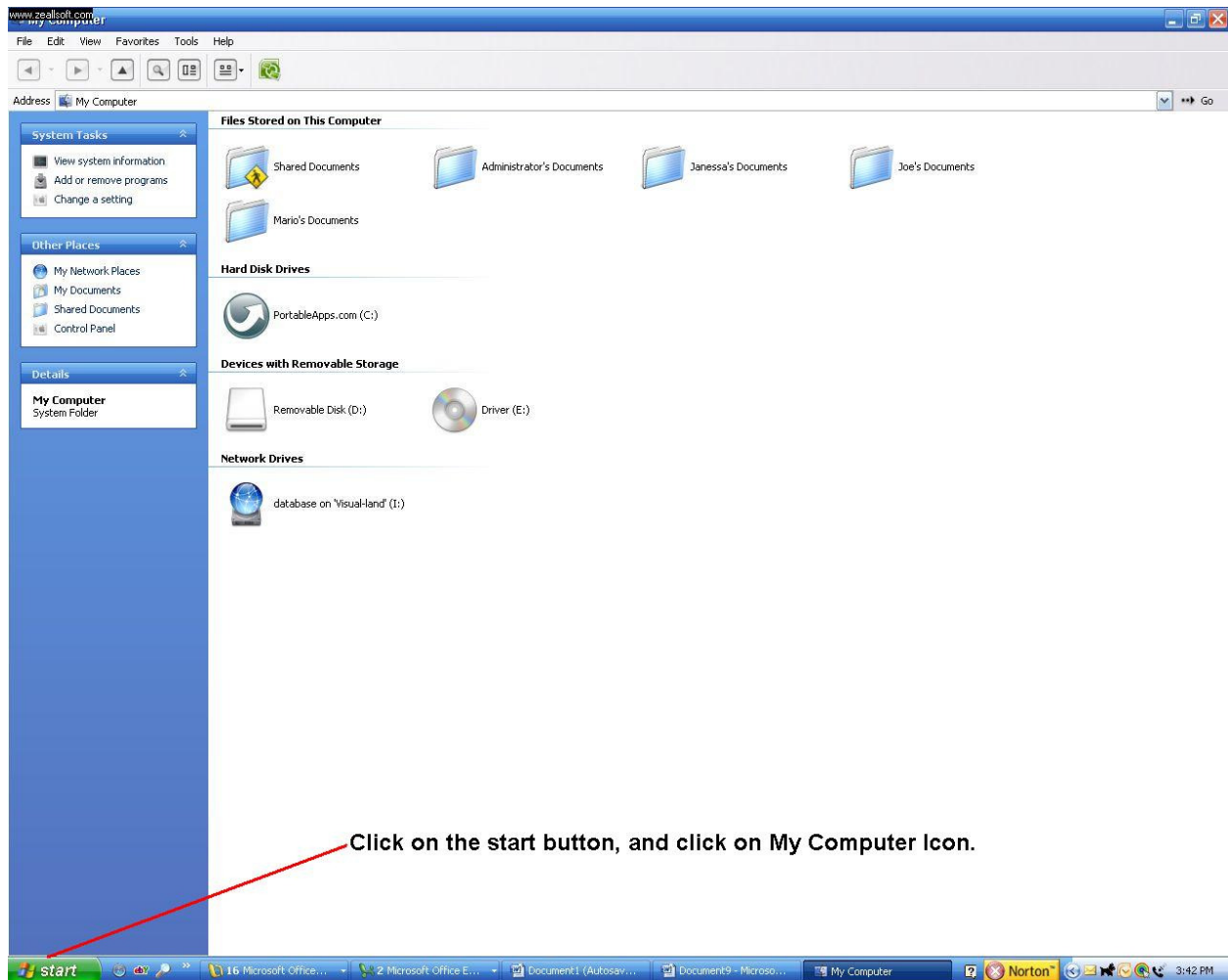




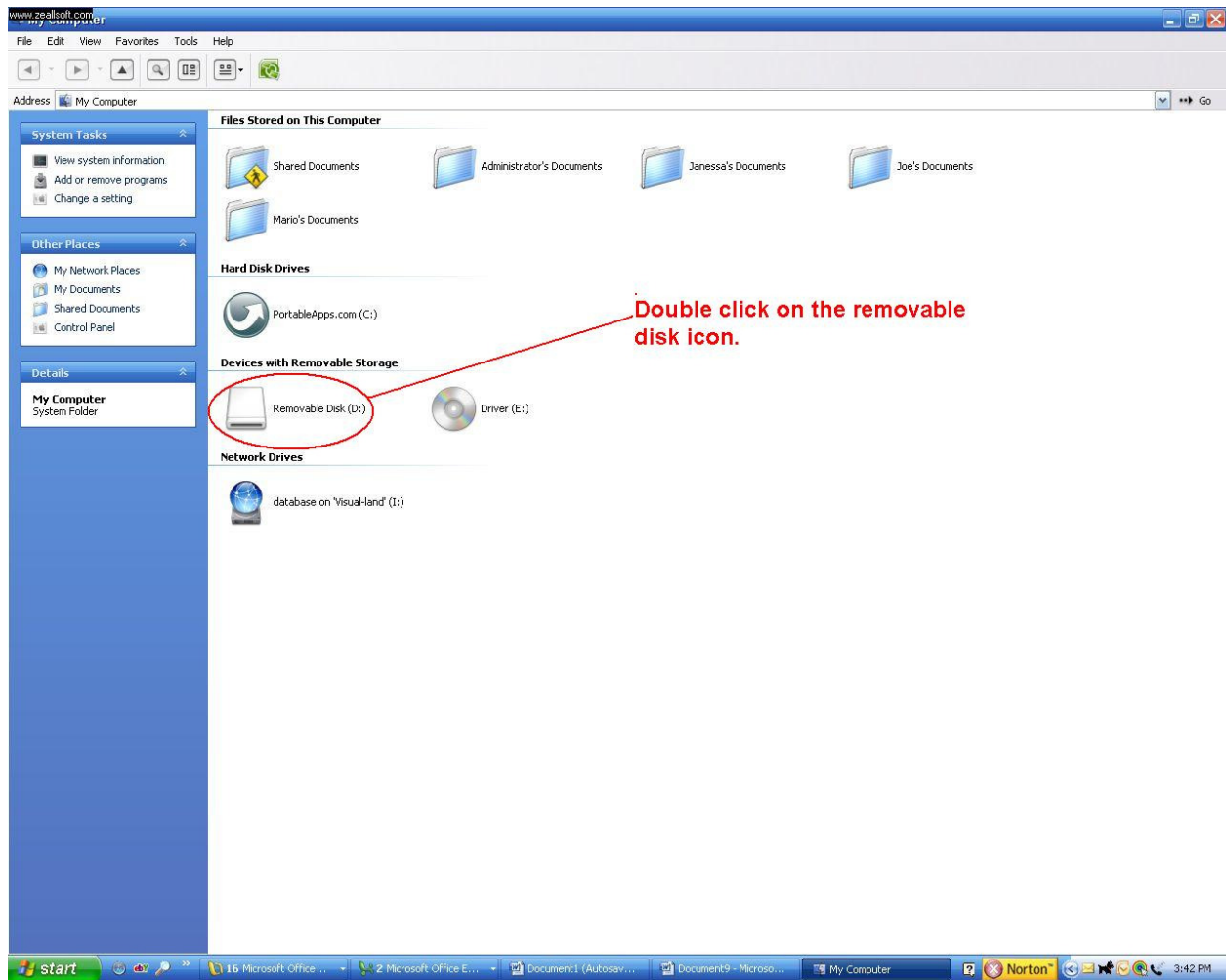
VTouch Quick Start Guide

- **Music/Audio**
- **Images/Photo**
- **Video/Avi**
- **Calendar**
- **Date/Time**
- **Calibration**
- **Footnote**

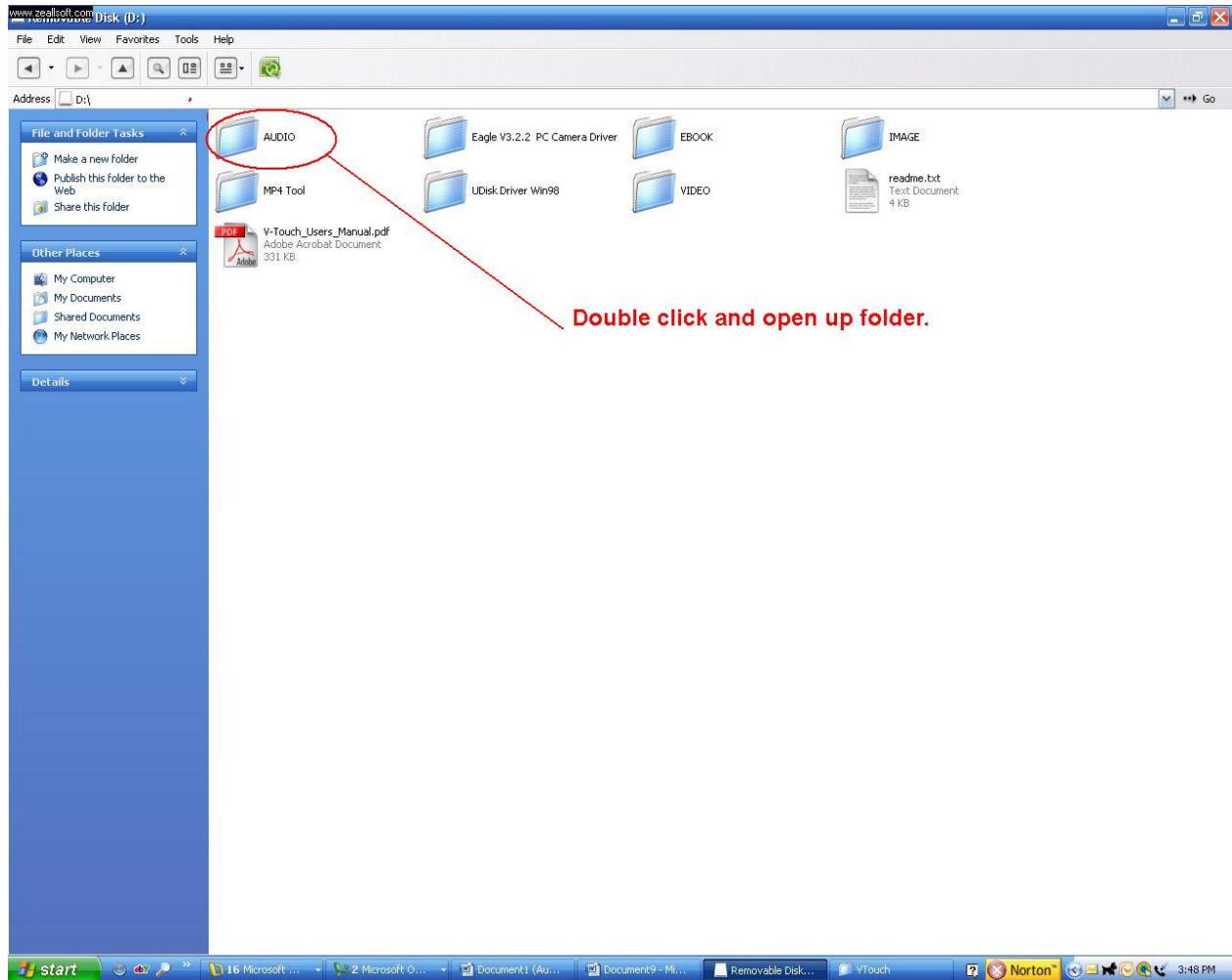
1. Plug your new VTouch to your computer via the USB cable that came with your Player.
2. Move the mouse cursor to the start button.
3. Click on *My Computer*



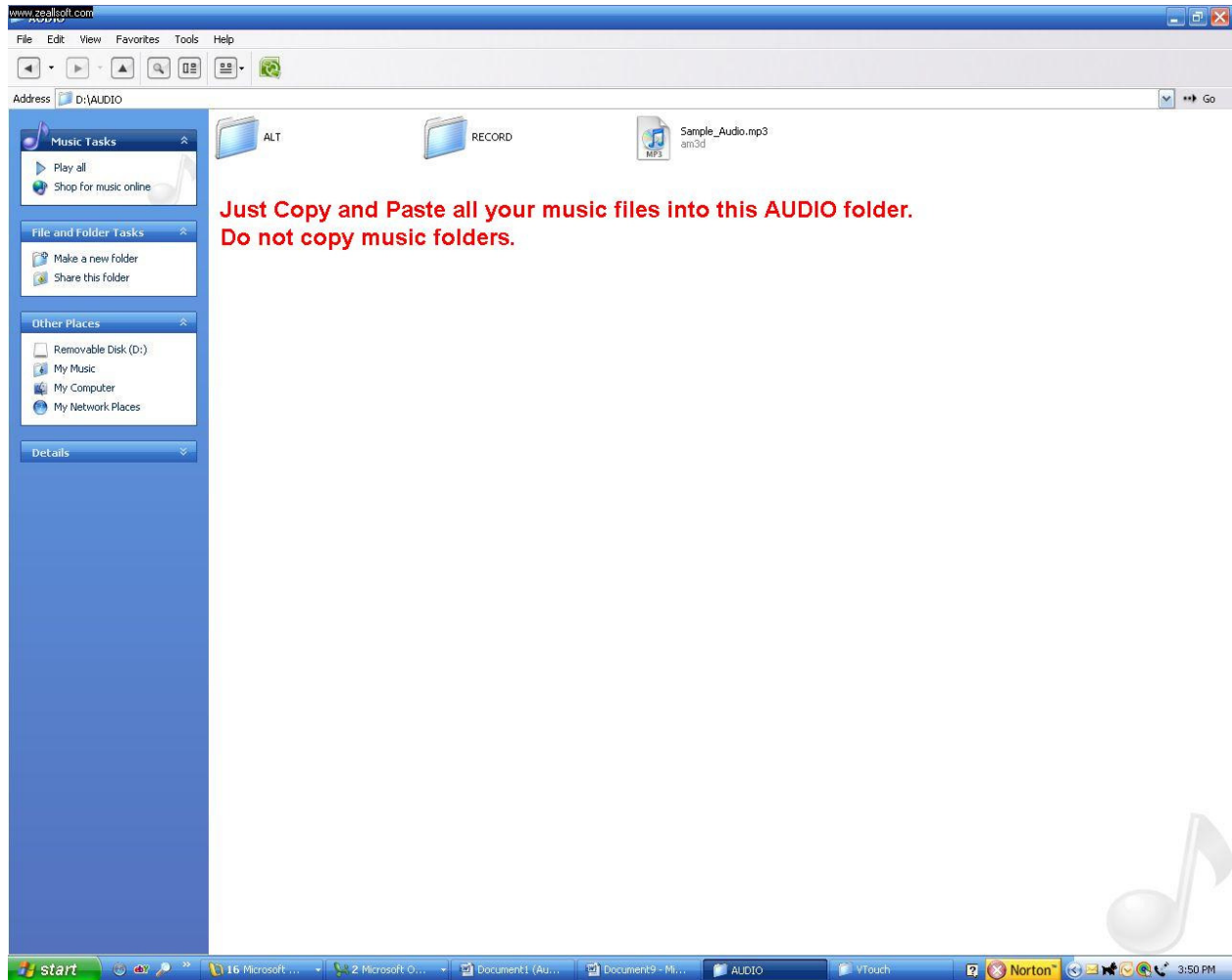
4. Click on *My Computer* and double-click the removable disk icon.



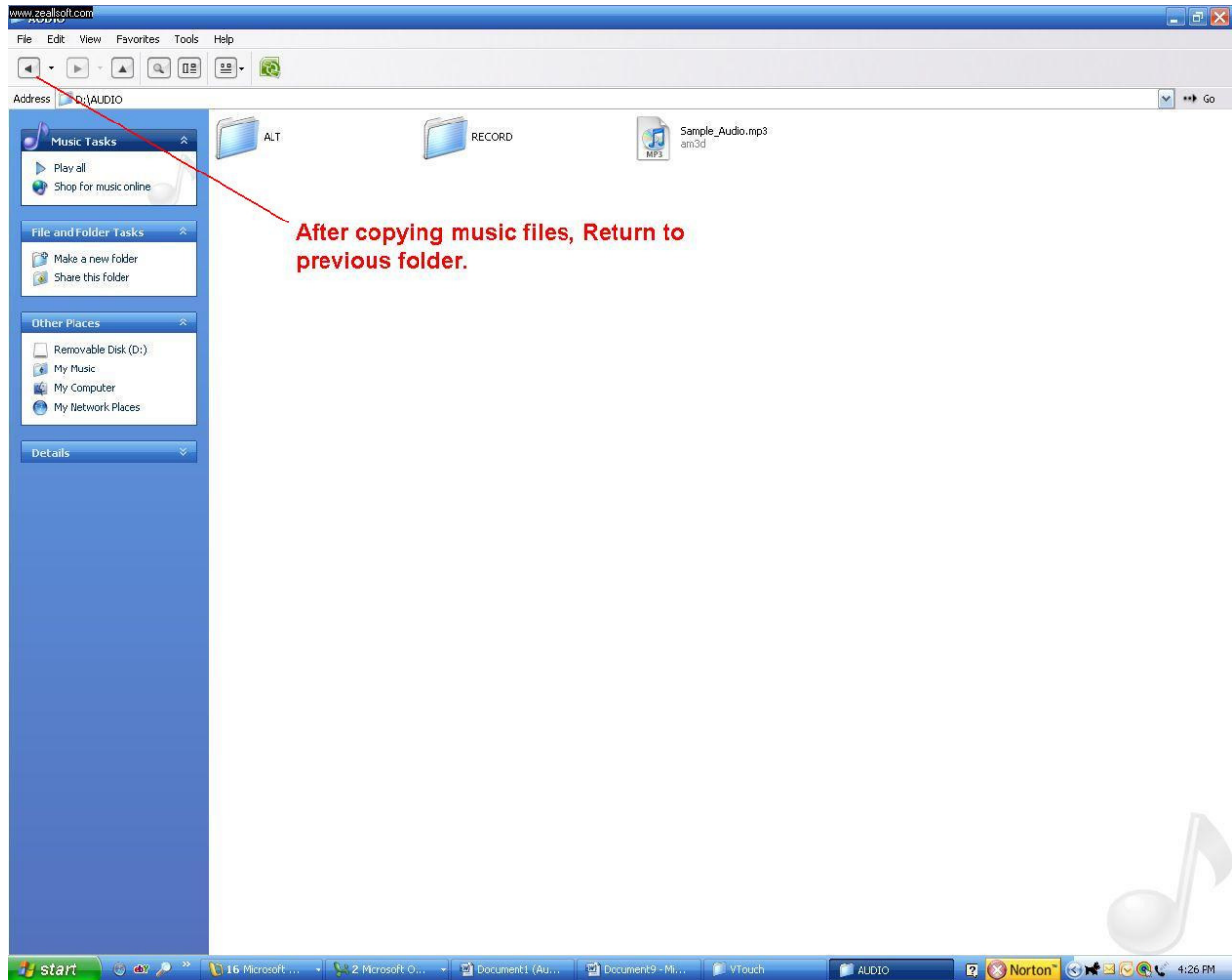
5. To add music, Double-click the *Audio* folder



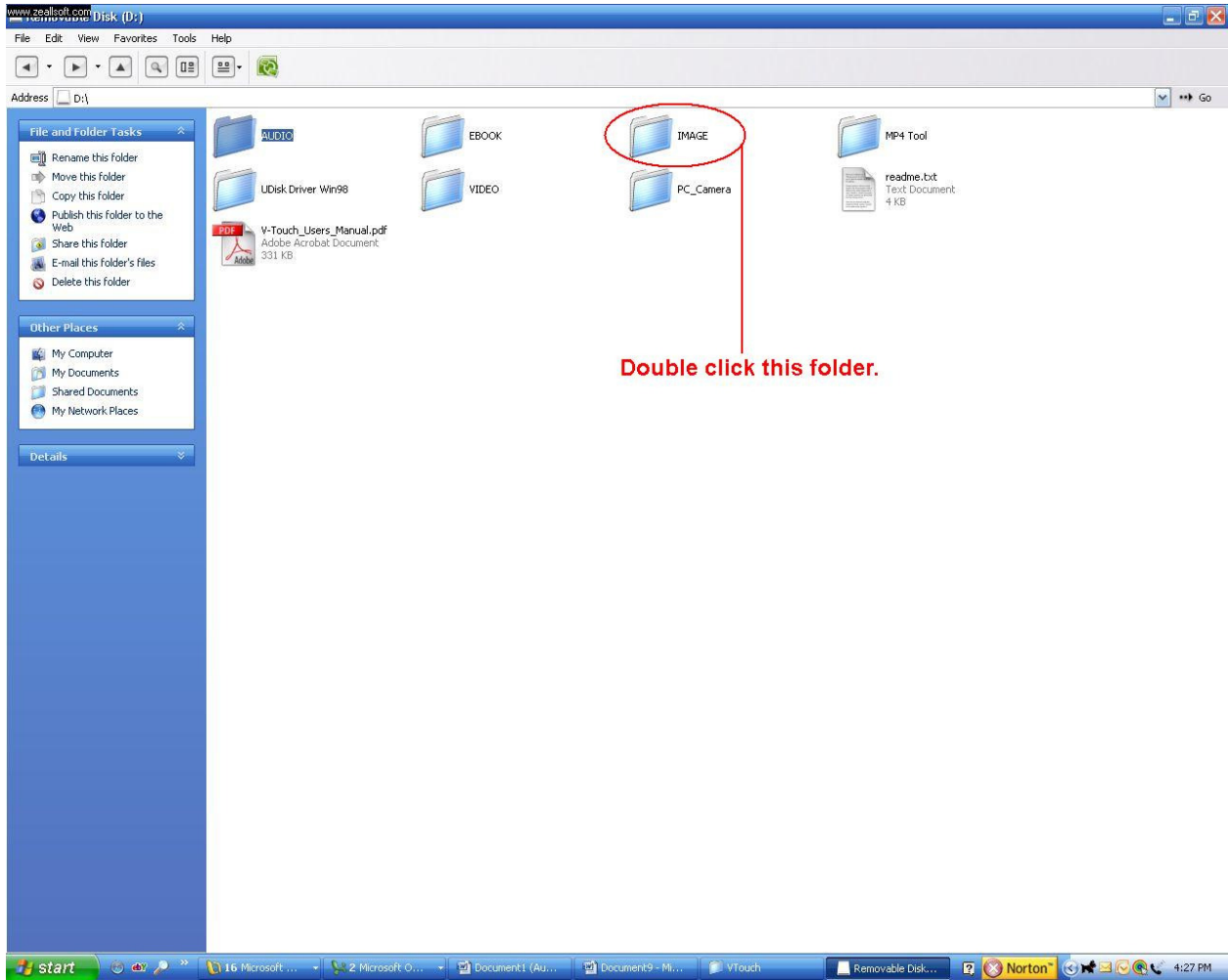
6. Copy and Paste your music files into this *Audio* folder



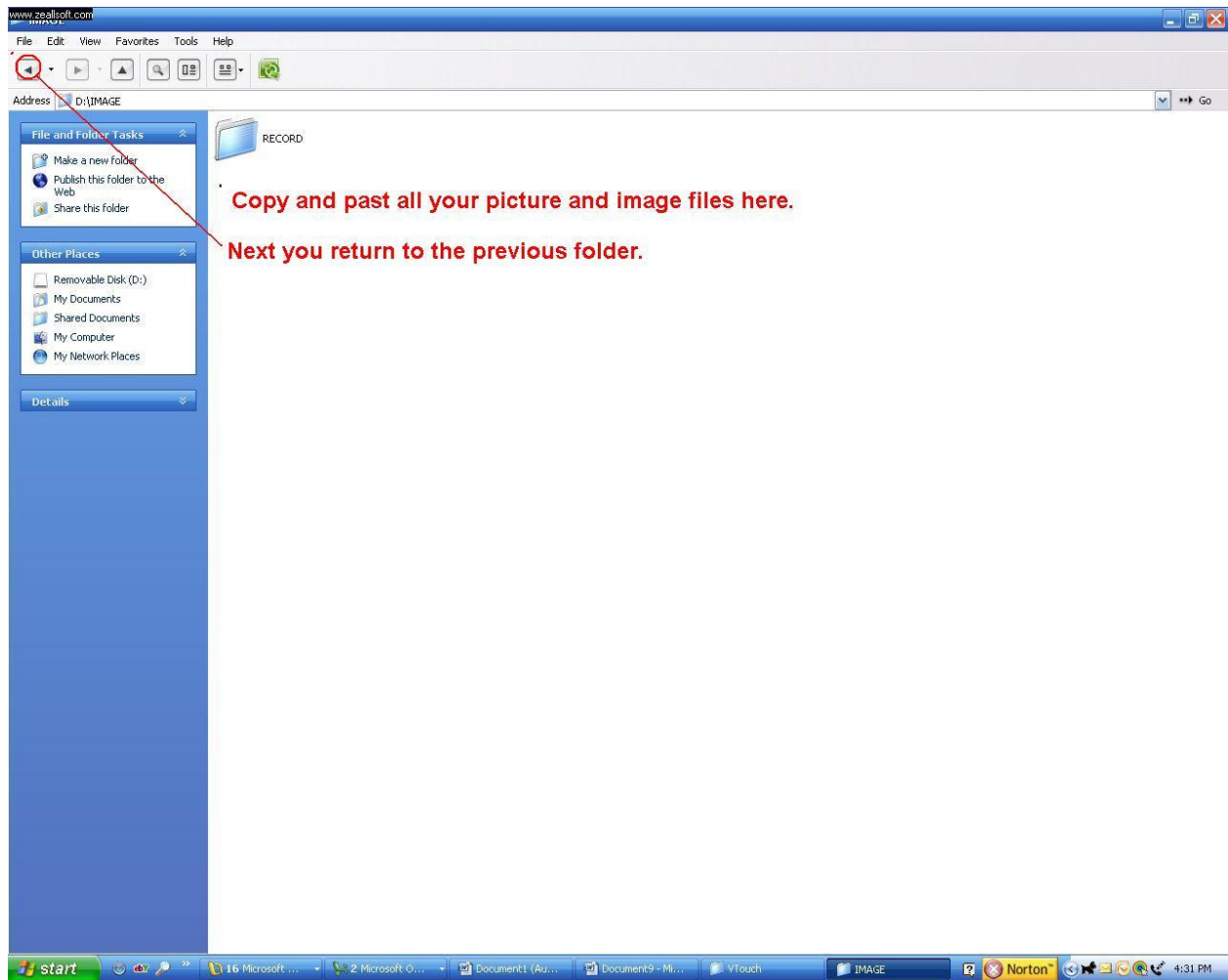
7. Return to the previous folder



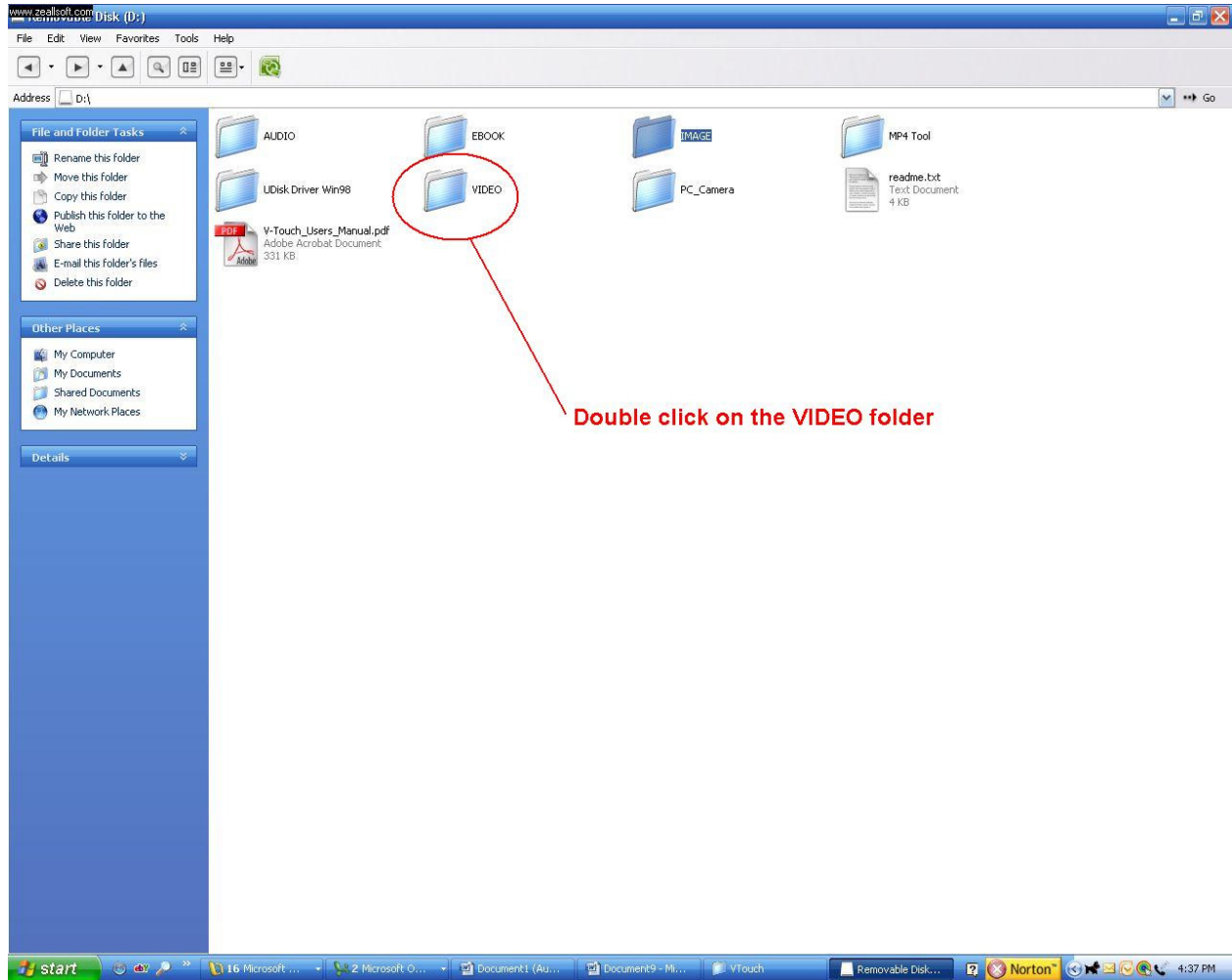
8. To add images, Double-click the **IMAGE** folder. Here you can copy & paste pictures. GIF, JPEG, and BMP.



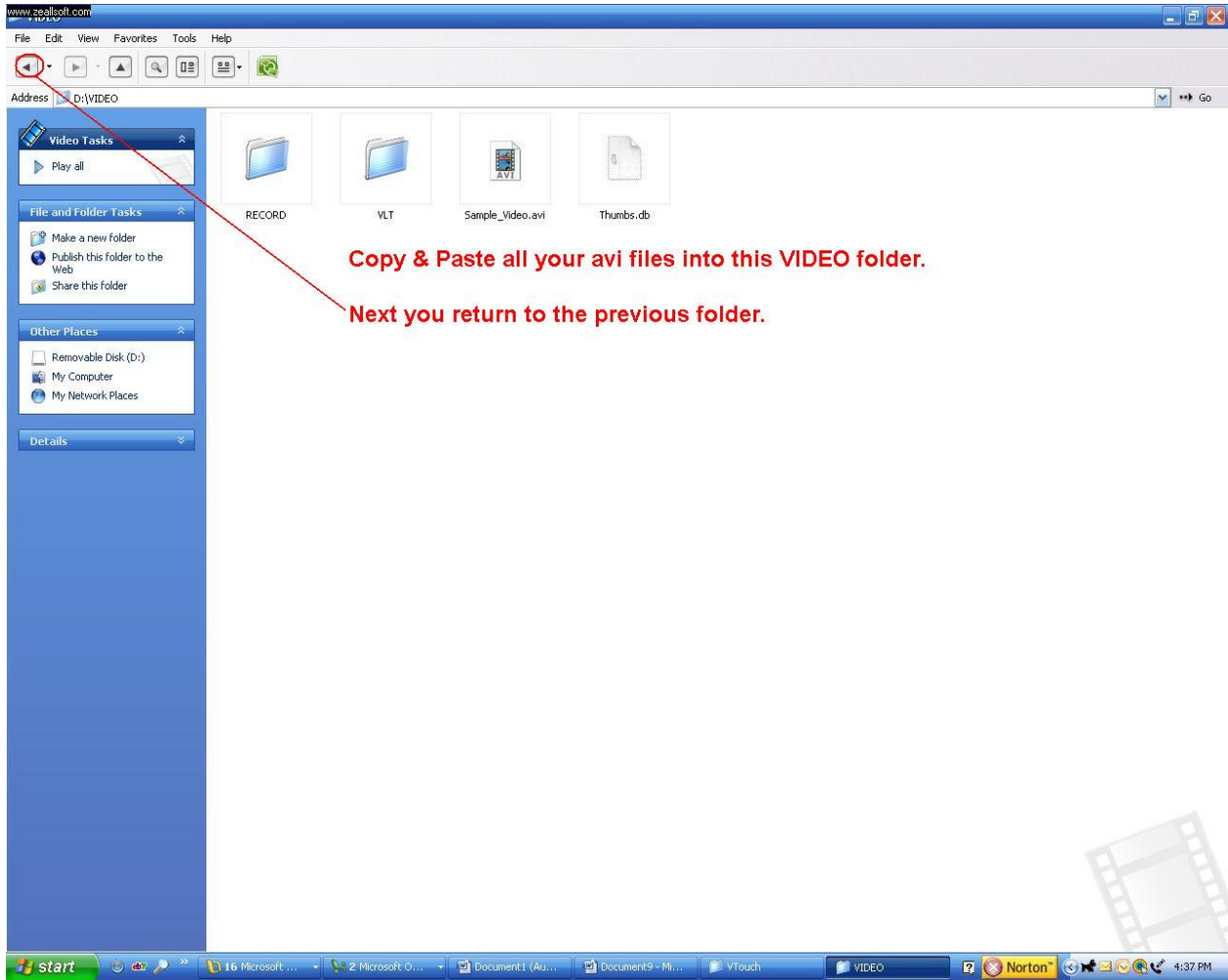
9. After you copy all your images, return to the main folder.



10. To add Avi files, Double-click the **VIDEO** folder. Here you can copy & paste *Avi* files.



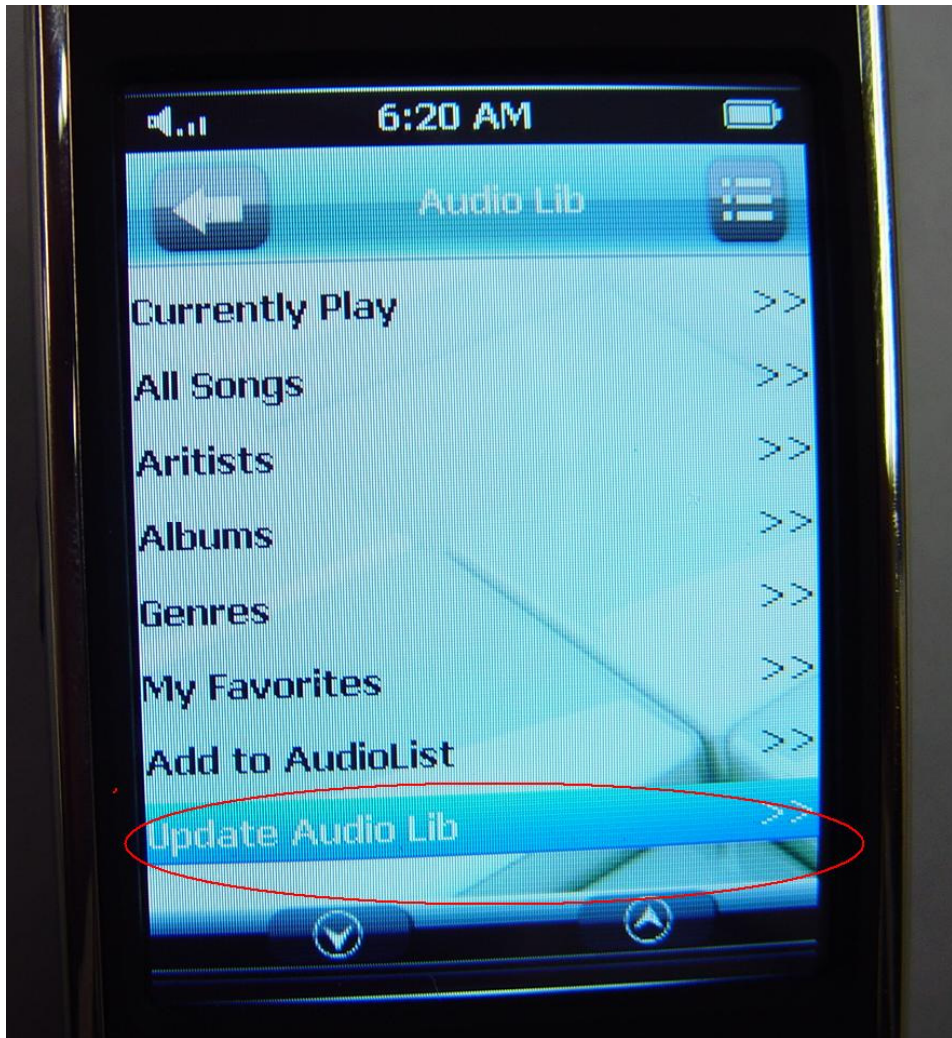
11. Copy & paste your AVI files into this folder. Then return to the previous folder.



- 12.** After all the different types of files have been copied to your VTouch player. Please disconnect the VTouch from the PC by safely removing the USB cable.
- 13.** Power on your VTouch player, by holding On/Off switch for about 3-5 seconds.
- 14.** Next we will update all the Music files.
- 15.** Tap gently the *Music* Icon.

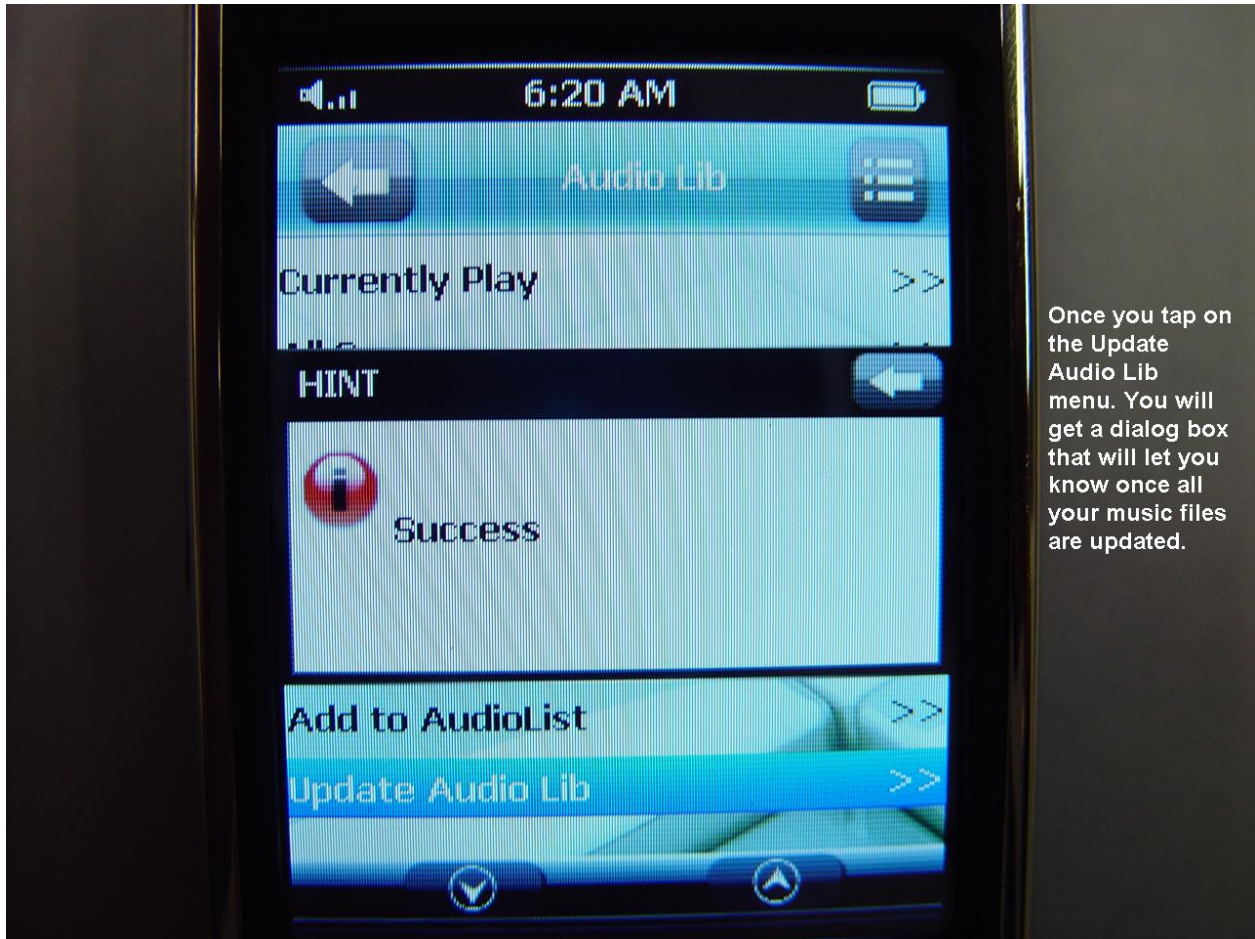


**With the stylus pen,
gently tap on the
Music icon.**



With your stylus pen, gently tap on the "Update Audio Lib" menu screen.

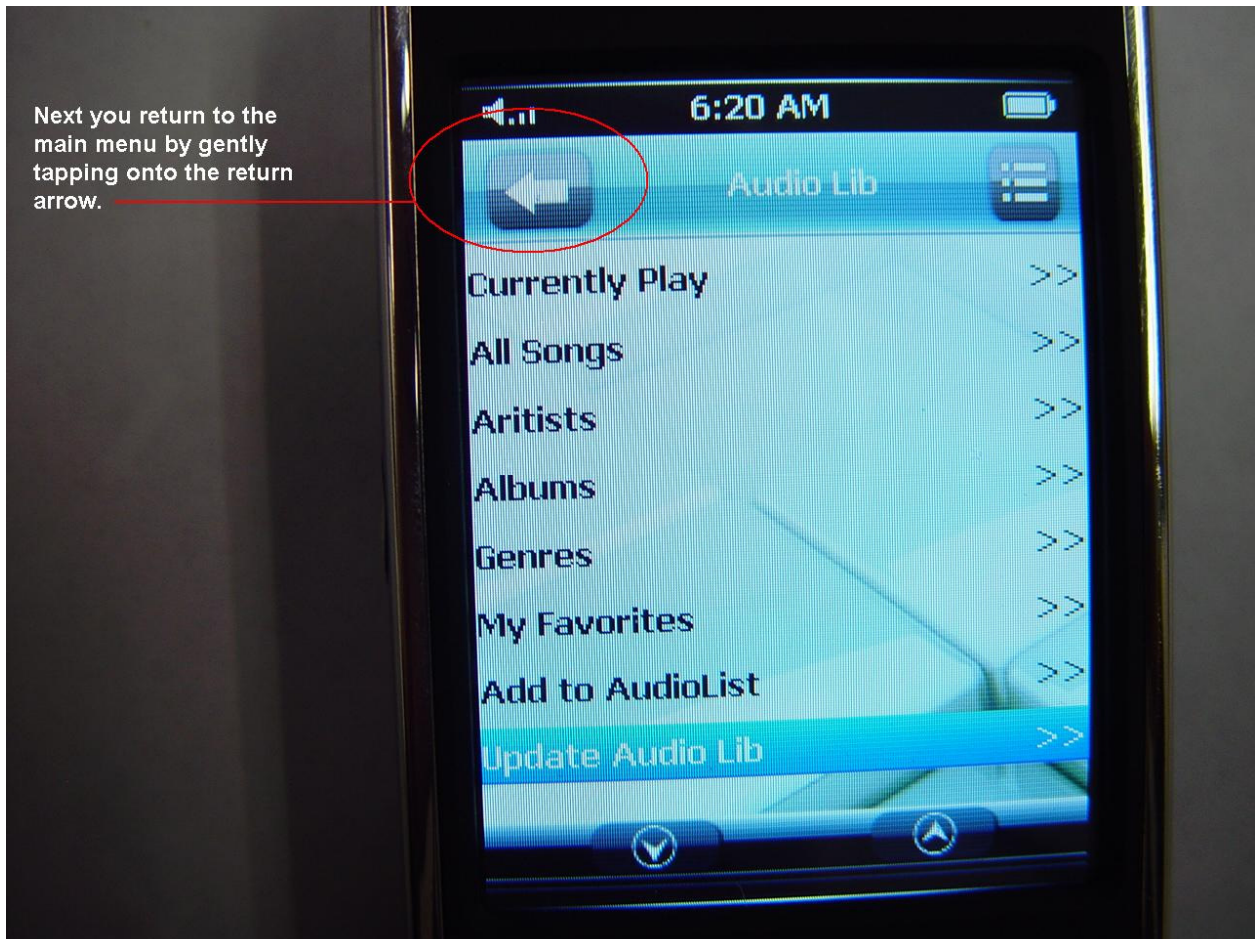
16. To update all the copied music files, Tap on the *"Update Audio Lib"*. You will see a dialog box that will update your music files. Depending on how many music files you have, this update should take about a minute or two.



Once you tap on the Update Audio Lib menu. You will get a dialog box that will let you know once all your music files are updated.

17. Above is a screen shot of the update success dialog box.

Next you return to the main menu by gently tapping onto the return arrow.



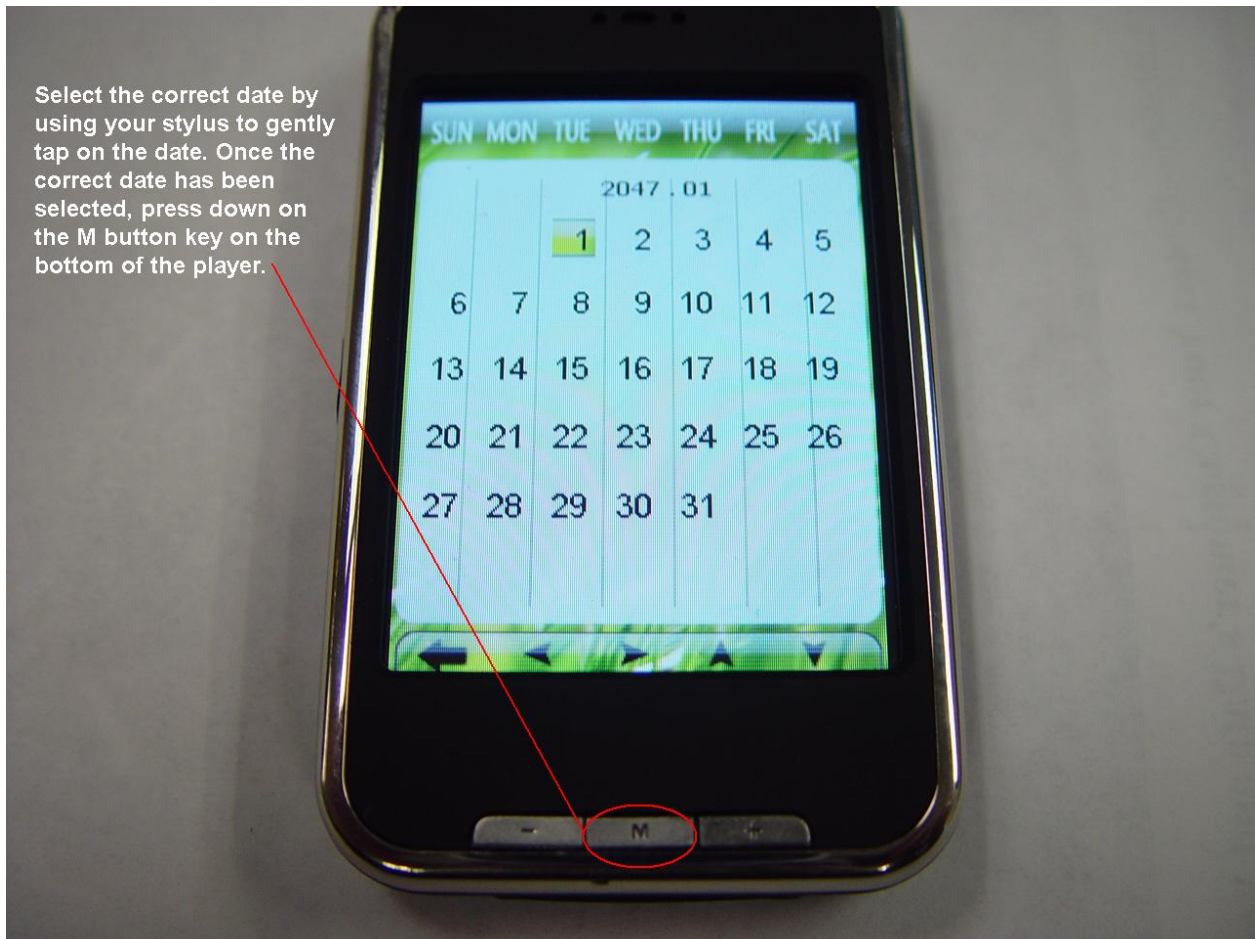
- 18.** Return to main menu by pressing on the left arrow icon. Note. From this Music menu you can select a variety of play back options, By simply tapping on the menu option item.



To adjust the Calendar.
Tap on the calendar
icon.

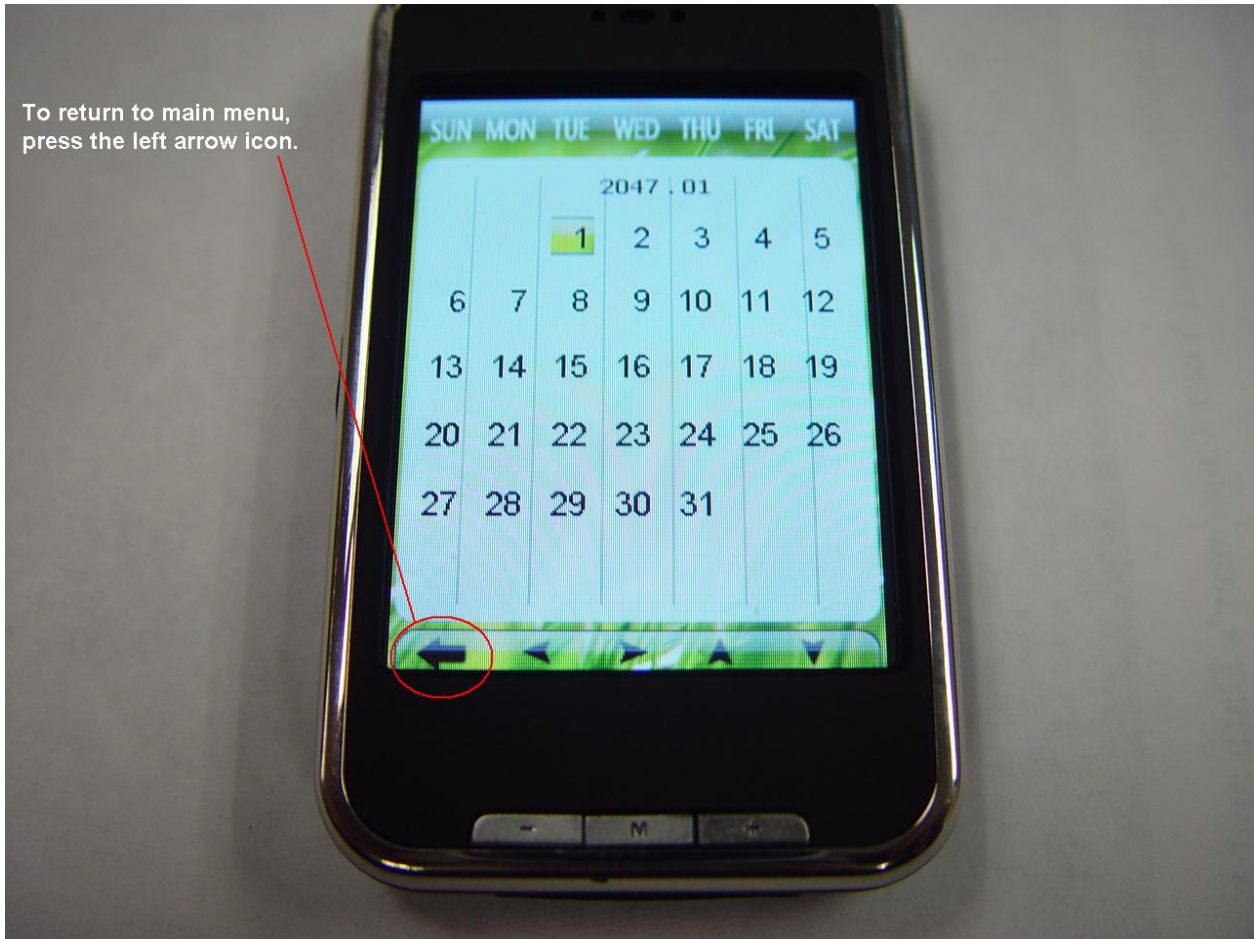
19. To adjust calendar, please tap on the *Calendar* Icon.

Select the correct date by using your stylus to gently tap on the date. Once the correct date has been selected, press down on the M button key on the bottom of the player.



20. The Calendar will appear. Select the correct date, press on the **M** button to save settings.

To return to main menu,
press the left arrow icon.



- 21.** To return to the main menu, gently tap on the lower left hand arrow icon.



Adjust the clock by gently tapping on the Clock icon.

22. To adjust the clock, tap on the *Clock* icon. And this will open the Clock settings.

Input your date by using the cursor arrow icons that pointed up or down. Once the year is selected, press on the right arrow icon to change MM (Month), and repeat the same steps for DD (Date). Press the M button on the player to save settings.

Follow the same steps to input time.

Once completed you will be returned to the main menu.



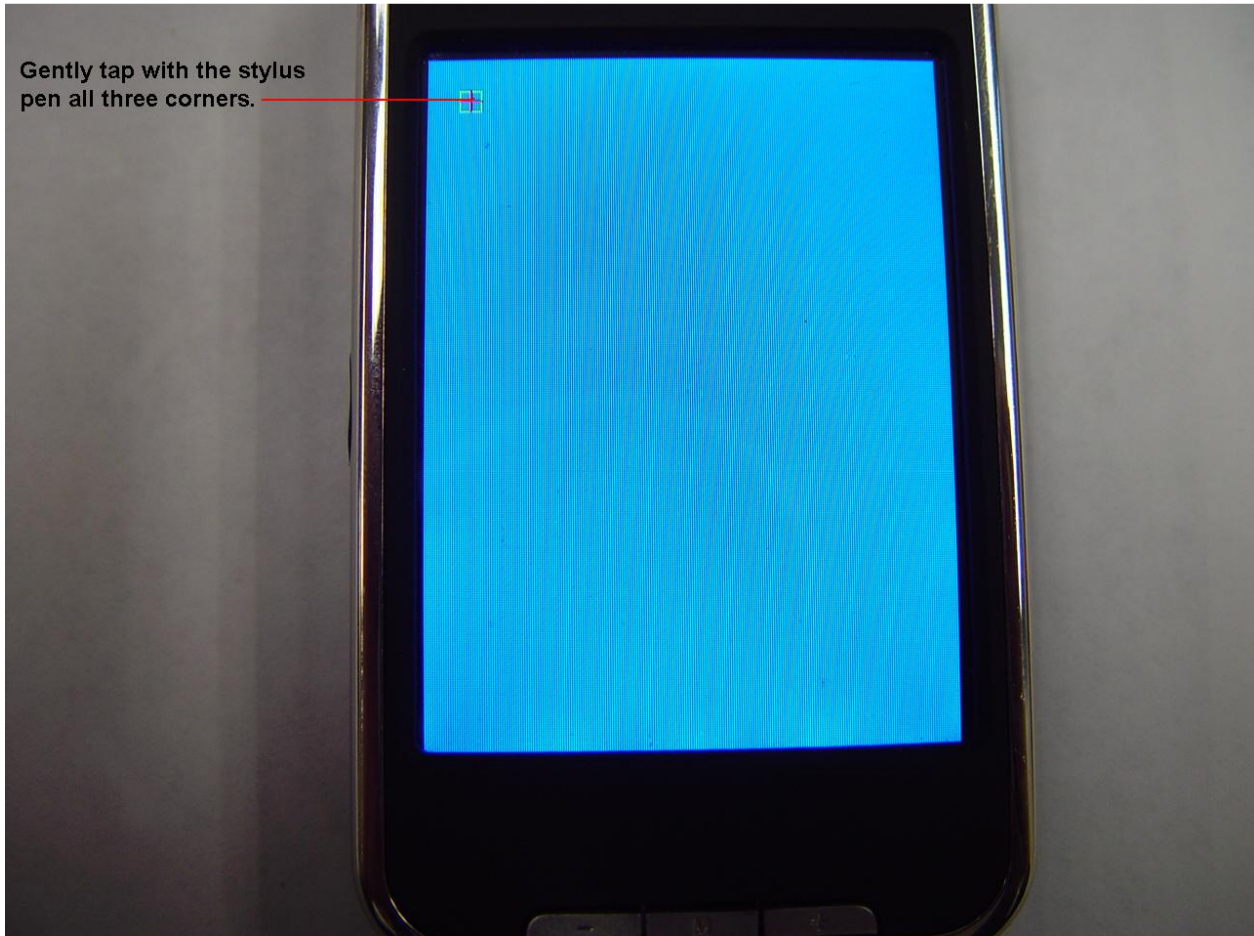
- 23.** To update, first start by selecting the year. You do this by using the arrow icons that are pointed up or down. Next you select Month (MM) by pressing the arrow icon to the right. Repeat the same steps for day (DD). Press the M button to save settings.
- 24.** And the same process is repeated to input time.
- 25.** After the time has been updated, press the **M** button on the bottom of the player, you will see a dialog box that confirms the settings saved were a success.

26. To Calibrate, only if the icons are not responding to tapping with the stylus pen. Please follow these instructions.



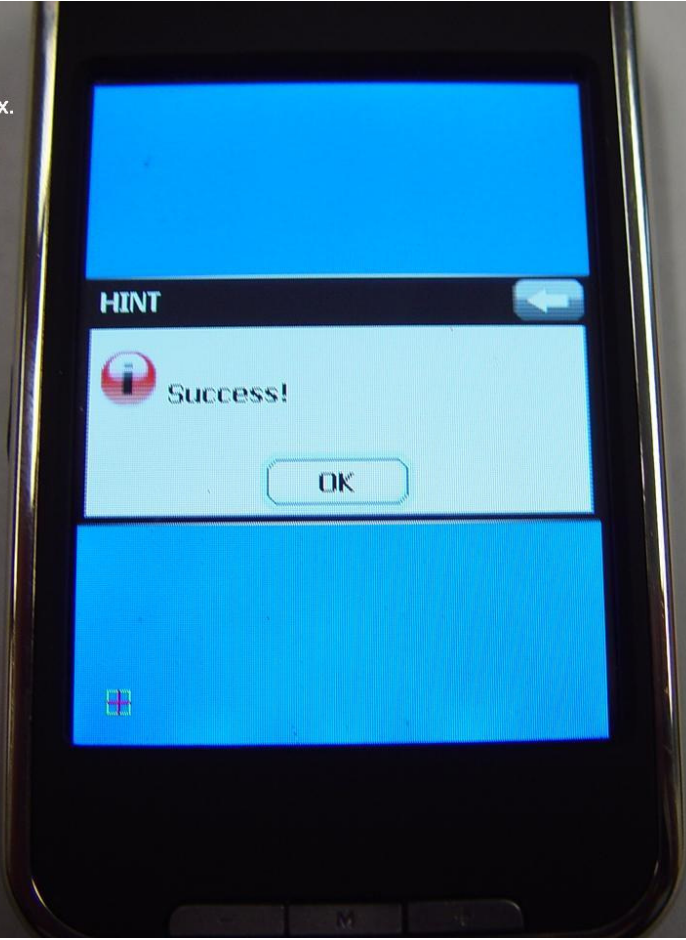
If you have an issue where the touch screen does not function correctly. Please press the "Calibrate" icon

Gently tap with the stylus pen all three corners.



If calibration is a success. You get a Success! dialog box.

Press ok to return to the main menu.



27. Footnotes.

To return to the main menu from The Date icon on the bottom of the VTouch display you must click the Off/On button to the right.

