

V·NET

Mini Notebook Computer



VISUAL LAND

Bring the World Home

VISUAL LAND V-NET NETBOOK

Notes for this manual

Information provided in this manual may vary from model to model, so your model may not have some of the features described in this book. The information contained in this document is provided “as is” and is subject to change without notice.

Visual Land makes no warranty of any kind with regard to this manual, but not limited to, the implied warranties of merchantability and fitness for a particular purpose. Visual Land shall not be liable for any errors contained herein or for incidental or consequential damages in connection with the furnishing, performance, or use of this manual or the examples herein.

Introduction

The Visual Land V-NET Netbook is a low cost broadband access terminal for today’s world of communications convergence and digital multimedia entertainment. It provides multimedia entertainment, high-speed broadband internet access and work on the go! It is equipped with various functions, such as E-Book Reader, MP3 Player, Game Player, enlarged PDA, and common business software such as web browsing, word processing, spreadsheets and more. Perfect for the light business traveler, student and every kid wanting to

enjoy the experience of exploring the world of broadband multimedia! The best way to learn to use your new product is to play and experiment, and refer to the online help and web links provided!

Product features:

- Processor: ARM 248 MHz 32 Bit-CPU
- Display terminal: 7-inch 800 x 480 high resolution TFT-LCD digital screen, true color image display
- Input: Standard 80key keyboard and mouse
- Sound card: AC97 Voice Card
- Communication: Broadband Internet Access, 10/100MB Ethernet Port, Built-in Wireless LAN adapter
- System: Embedded Windows CE 5.0 operating system-high security & virus free
- Ultra Mobile PC

Charging Your Batteries

Be sure to fully charge your battery pack before first use of your V-Net Netbook.

Preparing your NETBOOK

These are only quick instructions for using your NETBOOK. Read the following chapters for detailed information.

1. Connect the AC power adapter

The wall outlet differs in type by country. Your NETBOOK ships with an adapter compliant with your national standard.

2. Open the display panel

3. Turn ON the NETBOOK

When you open the display panel, do not force it down to the table or else hinges may break! Never lift the NETBOOK by the display panel.



1. Power On: Press and hold the power button until the Windows CE Operating System starts to boot.
2. Power Off: There are two ways to turn off the V-Net:
 - ① Press the power button until the OS shows that it is shutting down.
 - ② Power off through "Start" Menu selection.

Front View



LED Status Indicators (l-r):

1. Battery Charge Status
2. Ethernet Connection
3. Power On/Off
4. Num Lock Status
5. Caps Lock Status
6. WiFi Connection Status

Back View



Left side View



Right side View



Top side

1. Display Panel

The display panel functions the same as a desktop monitor. The NETBOOK uses an active matrix TFT LCD, which provides excellent viewing like that of desktop monitors. Unlike desktop monitors, the LCD panel does not produce any radiation or flickering, so it's easier on the eyes. Use a soft cloth without chemical liquids (use plain water if necessary) to clean the display panel.

2. Power Switch

The power switch allows powering ON and OFF of the NETBOOK and recovering from STR (Save-To-RAM). Press the switch once to turn ON and hold it to turn OFF the NETBOOK. The power switch only works when the display panel is open.

3. Audio Speaker System

The built-in stereo speaker system allows you to hear audio without additional attachments. The multimedia sound system features an integrated digital audio controller that produces rich, vibrant, sound (results improved with external stereo headphones or speakers). Audio features are software controlled.

4. Keyboard

The keyboard provides keys with comfortable travel (depth at which the keys can be depressed) and palm rest for both hands.

5. Touchpad and buttons

The touchpad and its buttons comprise a pointing device that provides the same functions as a desktop mouse. Scrolling is available to allow easy web and document navigation.

6. Status indicators (front)

- Power Indicator

The power indicator lights when the NETBOOK is turned ON and blinks slowly when the NETBOOK is in the Save-To-RAM (suspend) mode. This indicator is OFF when the NETBOOK is turned OFF.

- Battery charge indicator

The battery charge indicator (LED) shows the status of the battery's power as follows:

ON: the NETBOOK battery is charging when AC power is connected.

OFF: The NETBOOK battery is charged or completely drained.

- Wireless indicator

This is only applicable on models with built-in wireless LAN. When the built-in wireless LAN is enabled, this indicator will ON.

Bottom side

The bottom of the NETBOOK can get very hot. Be careful when handling the NETBOOK while it is in operation or recently been in operation. High temperatures are normal during charging or operation. DO NOT use on soft surfaces such as beds or sofas, which may block vents. DO NOT put the NETBOOK on your lap or other parts of the body to avoid injury from the heat.

1. Battery lock

The manual battery lock is used to keep the battery pack secured. Move the manual lock to the unlocked position to insert or remove the battery pack. Move the manual lock to the locked position after inserting the battery pack.

2. Battery pack

The battery pack is automatically charged when connected to an AC power source and maintains power to the NETBOOK when AC power is not connected. This allows usage when moving temporarily between locations. Battery time varies by usage and by the specifications for this

NETBOOK. The battery pack can't be disassembled and must be purchased as a single unit.

3. Reset button (emergency)

In case your operating system cannot be properly turned OFF or restarted, the reset button can be depressed with a pin or straightened paper clip to restart the NETBOOK.

Right side

1. USB host port (2.0/1.1)

The USB port is compatible with USB 2.0 or USB 1.1 devices such as keyboards, storage devices, connected in a series up to 12Mbits/Sec (USB 1.1) and 480Mbits/sec (USB2.0). USB allows many devices to run simultaneously on a single computer, with some peripherals acting as additional plug-in sites or hubs. Also, the USB supports hot-swapping function.

20.3

Left side

1. Memory card slot

The built-in memory card reader can read MMC/SD cards from devices such as digital cameras, MP3 Players, mobile phones, and PDAs.

2. Headphone out jack

The stereo headphone jack (3.5mm) connects the NETBOOK's audio out signal to amplified speakers or headphones. Using this jack automatically disables the built-in speakers.

3. Microphone jack

The microphone jack is designed to connect the microphone used for voice narrations, or simple audio recordings.

Rear Side

1. Power (DC) input

The supplied power adapter converts AC power to DC power for use via this jack. Power supplied through this jack supplies power to the NETBOOK and charges the internal battery pack. To prevent damage to the NETBOOK and battery pack, always use the supplied power adapter.

Caution: *May become warm to hot when in use. Be sure not to cover the adapter and keep it away from your body.*

2. LAN port

The eight-pin RJ-45 LAN port supports a standard Ethernet cable for connection to a local network. The built-in connector allows convenient use without additional adapters.

3. USB host port (2.0/1.1)

The USB port is compatible with USB 2.0 or USB 1.1 devices such as keyboards, storage devices, connected in a series up to 12Mbps/sec (USB1.1) and 480Mbps/sec (USB2.0). USB allows many devices to run simultaneously on a single computer, with some peripherals acting as additional plug-in sites of hubs. Also, the USB supports hot swapping function.

Power System Using AC power

The NETBOOK power comprises two parts, the power adapter and the battery power system. The power adapter converts AC power from a wall outlet to the DC power required by the NETBOOK. Your NETBOOK comes with a universal AC-DC adapter for connection to any 100v-120v as well as 220v-240v outlets without setting switches or using power converters. Different countries may require an adapter to connect the provided US-standard AC power cord to a different standard. Most hotels provide universal outlets to support different power cords as well as voltages. It is always best to ask an experienced traveler about AC outlet voltages before traveling.

The power adapter may become warm to hot when in use. Be sure not to cover the adapter and keep it away from your body.

Damage may occur if you used a different adapter to power the NETBOOK or use the NETBOOK's adapter to power other electrical devices. If there is smoke, burning scent, or extreme heat coming from the AC-DC adapter, seek servicing. Seek servicing if you suspect a faulty AC-DC adapter. You may damage both your battery pack(s) and the NETBOOK with a faulty AC-DC adapter.

Using battery power





The NETBOOK is designed to work with a battery pack. The battery pack consists of a set of battery cells housed together. A full charged pack will provide several hours of battery life. Additionally battery packs are optional and can be purchased separately through a NETBOOK retailer. Remember to fully charge the battery before first use and whenever it is depleted to prolong battery life.


Only use battery packs and power adapters supplied with this NETBOOK or specifically approved by the manufacturer or retailer for use with this model or else damage may occur to the NETBOOK.

How to Charge the Battery

1. Plug in the Power adapter to Power adaptor port of V-Net, the Battery charge LED will light up. Charging will be completed once the LED has turned off.
2. To see the charging status, turn on the V-Net by pressing and holding the Power on/off button. Once the system has booted to the Windows CE desktop, the Charging status will be displayed on the right hand side of the Menu bar as indicated below.
3. During Battery Charging the V-Net can be used as normal, (Please be note that the charging time will be longer when the system is in use).
4. Charging the Battery normally requires around 3 hours from low battery charge to fully charged. During Charging the machine will become warm, but this is normal.

Checking the Battery Level

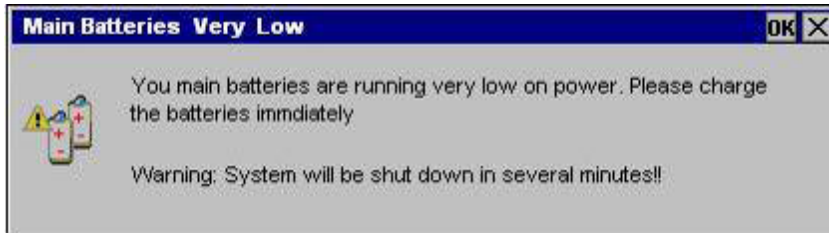
Double clicking the battery icon  will show the percentage of battery power remaining. This icon can also be double clicked to show the Power Properties window. This window can also be shown by clicking the “Start”  button, selecting  and then . When the Control Panel is

shown, click the Power Options  icon to show Power Properties.



Status	Description
Good	Good Battery Level
Low	Low Battery Level, should be charged
Very Low	Low Battery Level, must be charged

When the battery is almost empty, the “Main Batteries very low” popup will appear as shown below, the V-Net will be automatically power off after this popup has been displayed for a short time.



Battery care

The NETBOOK battery pack, like all rechargeable batteries, has a limit on the number of times it can be recharged. The battery pack's useful life will depend on your environment temperature, humidity, and how your NETBOOK is used. It is ideal that the battery be used in a temperature range between 5C and 40C. You must also take into account that the NETBOOK internal temperature is higher than the outside temperature. Any temperatures above or below this range will shorten the life of the battery. But in any case, the battery pack's usage time will

eventually decrease and a new battery pack must be purchased from an authorized dealer for the NETBOOK. Because batteries also have a shelf life, it is not recommended to buy extras for storing.

For safety reasons, DO NOT throw the battery in fire, DO NOT short circuit the contacts, and DO NOT disassemble the battery. IF there is any abnormal operation or damage to the battery pack caused by impact, turn OFF the NETBOOK and contact an authorized service center.

Emergency shutdown and reset

In case your operating system cannot function properly turn OFF or restart your NETBOOK. Additional ways to shutdown and reset your NETBOOK:

Shutdown: Hold the power button until the system shuts down.


Reset: Press the reset button. Use a pin or a straightened paper clip to press the power switch.

DO NOT use emergency shutdown/reset while data is being written or read; doing so can result in loss or destruction of your data.

Keyboard Introduction

The V-Net uses a standard QWERTY keyboard layout.



The Number Keypad (Blue Symbols on the Keyboard) becomes active when the Num Lock key  has been pressed (the NUM Lock status LED will light). Pressing the Num Lock again will disable this function.



Keyboard Usage - Special function keys

		Document Page (scroll up)
		Beginning of Line
		Document Page (scroll down)
		End of Line

Function keys varies from model to model, your mini laptop may or may not support some of all the special keys. The following defines the colored hot keys on the NETBOOK keyboard. The colored commands can only be accessed by

first pressing and holding the functioning key while pressing a key with a colored command. Some function icons appear on the OS taskbar after activation.

The hot key locations on the function keys may vary depending on model but the functions should remain the same. Follow the icons whenever your hot key locations do not match the manual.

- zzz icon: places the NETBOOK in suspend mode (save to RAM)
- Radio tower (F3) Wireless models only: Toggles the internal wireless LAN ON or OFF with an on-screen-display. When enabled, the corresponding wireless indicator will light.
- Sun down icon (F4): Decreases the display's brightness.
- Sun up icon (F5): Increases the display's brightness.
- Task manager icon (F6): Initiator the task manager to view the application process or terminates applications.
- Crossed speaker icon (F7) Mutes the speaker
- Speaker down icon (F8): Decreases speaker volume.
- Speaker up icon: (F9): Increases speaker volume.
- Scroll lock: Toggles the "scroll lock" ON and OFF. Allows you to use a larger portion of the keyboard for cell navigation.
- Num lock: Toggles the numeric keypad (number lock) ON and OFF. Allows use of a larger portion of the keyboard for number entering.

- Page up: press to scroll up in documents or web browser.
- Page down: Press to scroll down in documents or web browser
- Home: Press to move the cursor to the beginning of the line.
- End: Press to move the cursor to the end of the line.
- Menu with cursor icon: Activates the properties menu and is equivalent to right-clicking the touchpad/mouse on an object.

Touchpad usage

Clicking/Tapping- With the cursor over an item, press the left button or use your fingertip to touch the touchpad lightly, keeping your finger on the touchpad until the item is selected. The selected item will change color.



Double Clicking/ Double tapping: This is a common skill for launching a program directly from the corresponding icon you select. Move the cursor over the icon you wish to execute, press the left button or tap the pad twice in rapid succession, and the system launches the corresponding program. If the interval between the clicks or taps is too long, the operation will not be executed.

Dragging- Dragging means to pick up an item and place it anywhere on the screen you wish. You can move the cursor over the item you select, and while keeping the left button depressed, moving the cursor to desired location, then release the button. Or, you can simply double-tap on the item and hold while dragging the item with your fingertip.

Using SD Cards

1. Please insert the SD Card (Brand name side face down) into the Card slot as shown below.



Push the SD Card into the slot until it “clicks” into place to confirm the card is in correctly and locked into position. To view documents on the SD Card:

1. Double Click “My Computer” on desktop



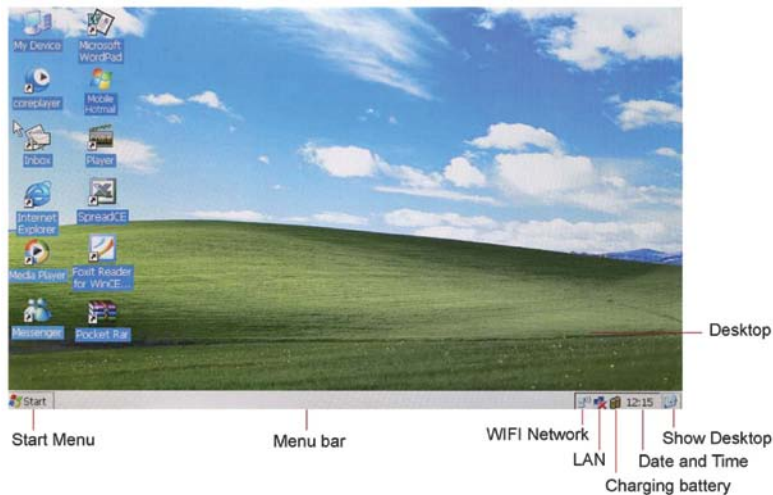
2. Double click the Storage Card icon as to view the files stored on the SD Card.
3. Files or applications stored on the SD Card can be opened or run directly from the Card or copied to the main system drive.

To remove the SD card:

1. Close any applications or documents which have been opened from the SD Card.
2. Lightly press the card, it will part eject automatically, remove the card from the slot.

Note:

1. Please insert the card the right way round and don't try to force a card into the slot.
2. If an SD Card has been locked, the V-Net cannot format or copy data to the card.
3. Please do not repeatedly insert and remove the card, this may cause damage to the card.



Using Applications

System applications can be started either by clicking on the icon of the relative application on the Desktop, or by clicking the Start button and selecting the required program from the Programs Menu.

1. Open through “Start” Menu, Click **“Start”**



2. Double click the required Program

In order to use the V-Net in most efficient way, it is suggested not to start too many programs at the same time, or have too many Internet Explorer windows open together. Otherwise the system may start to slow down.

Connecting USB Devices

The V-Net has 3 USB device ports, which can be used to connect to USB devices such as Keyboards and Mouse etc.



The Side USB Ports are for an external Mouse and Keyboard.



The rear USB port is the only port for use with other USB devices such as Flash Memory Drives, Optical Drives, MP3 Players, etc.

The V-Net Supports Microsoft Active Sync. For more information on ActiveSync or Windows Mobile Device Center please refer to this web site:



<http://www.microsoft.com/windowsmobile/en-us/help/synchronize/default.aspx>

Network

Ethernet LAN Communication

The V-Net has a 10/100 Ethernet Port that can be used to connect to a LAN (Local Area Network).

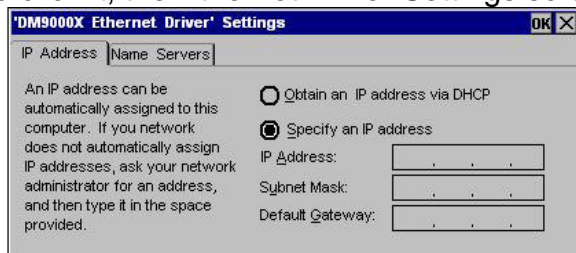


Once a network has been connected, the network icon will change from  to  in the Start bar, at the bottom right hand side of the display.

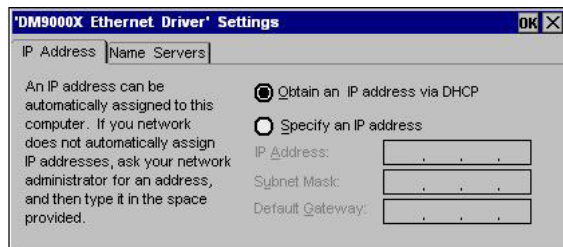
1. Click the “Start” icon.
2. Select “Network Connections” and the following will be displayed:



3. Select and double click it, the Ethernet Driver Settings screen will appear.



4. Move the pointer to “Obtain an IP address via DHCP” to allow the V-Net to automatically be assigned its networking settings from a Router as shown below:



5. Click “OK” to confirm the setting.
6. Network settings can also be manually entered, if “Specify an IP address” is selected instead.

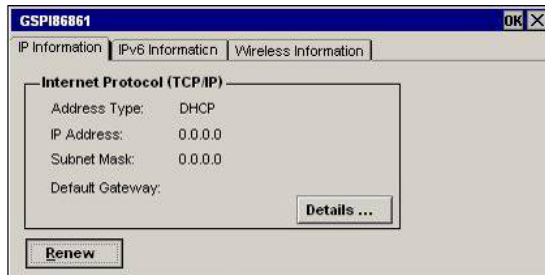
Note: Please unplug all the connections before moving the V-Net, as damage may occur if any force is applied to these connectors.

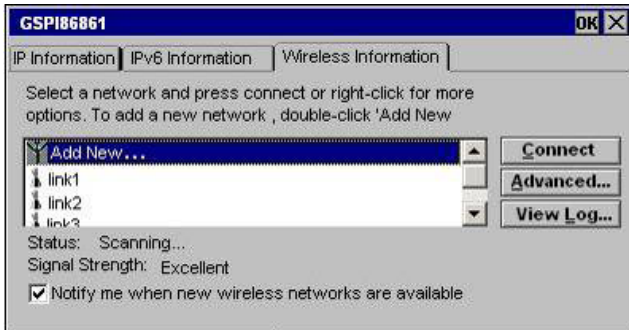
Wireless Communication

Before using the WiFi Connection, please make sure you know the SSID (name of the network to which you are going to connect) and security key (such as WEP, WPA) assuming the network is secure.

To find out the status of the WiFi Device, double click the icon on the menu bar, the pictured window will pop up.

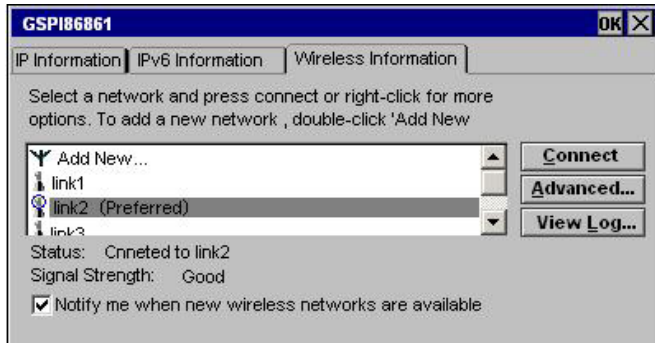
Select “Wireless Information”, then the next screen will appear.







All the wireless routers within range will automatically be detected as shown above. Select your router by clicking the router name in the list, such as “link2” shown above.

If network doesn't have password, you can click **Connect** to start the connection, if successful, the Dialog box "Wireless Information" will show the related information such as connection status, signal strength as shown below:

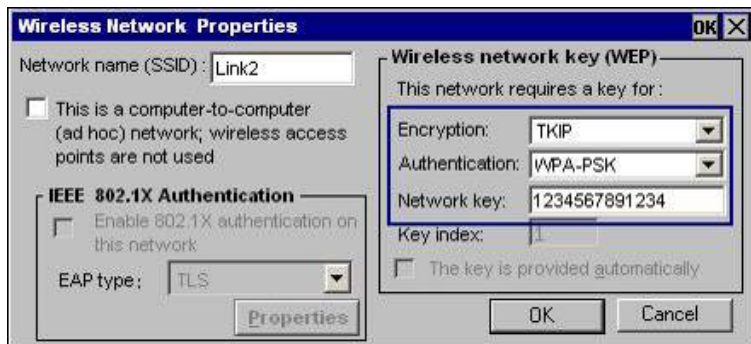


If the connection is successful, the menu bar icon will change from  to  this icon will flash during data transfer. If security Encryption is enabled on the Wireless Network you are connecting to, the Wireless Network Properties screen will be shown. This will require the Encryption type to be chosen, two Security types are supported, WEP (16 bit and 32 bit), and WPA-PSK.

Note: The Security Key may be printed on a sticker on the Wireless Router, or it may have been supplied with the documentation you received with the

equipment. If not please contact your service provider or whoever setup the Router to obtain the correct information for your wireless network.

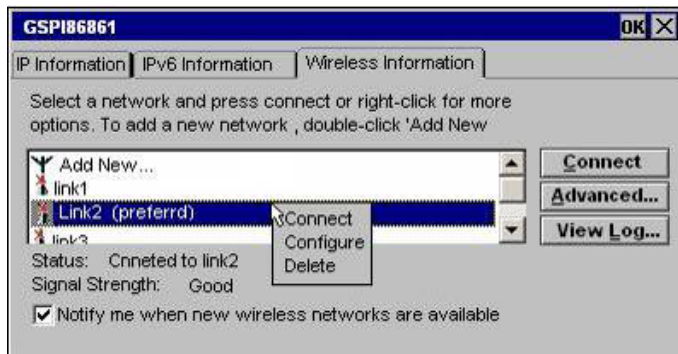
Please enter the Password in the “Network Key” box as below:



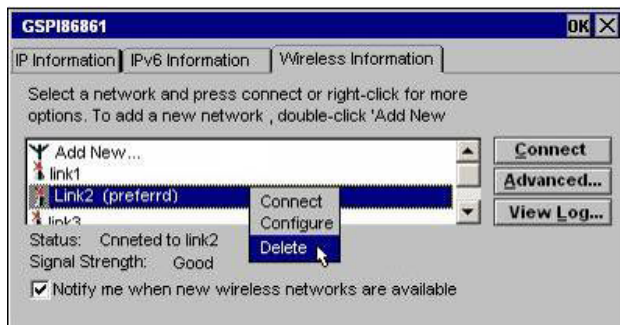
After confirming the settings by clicking “OK”, it will go back to “GSP186861” interface. Click **Connect** to make the connection. If the connection fails, this may be because the wrong password has been entered.

You can also try deleting all the detected router names (by right click and selecting “delete”), then switch the WiFi off and on again, then entering related data for your wireless network and repeat the procedure for your wireless network name again as described before.

To delete a detected wireless network, in the window “GSPI86861”, press the right button once the correct wireless network has been selected as shown:



Select the “Delete” option



Note: It is recommended switching off WiFi when not in use, this will save power consumption and allow the battery to last longer.

System Settings Control panel

System Settings allow you to make changes to many of the systems settings like system clock, date, sound, security and power settings. All the possible settings are described below. System Settings allow you to make changes to many of the

systems settings like system clock, date, sound, security and power settings. All the possible settings are described below. Double click “Control Panel” folder in “My Computer.”

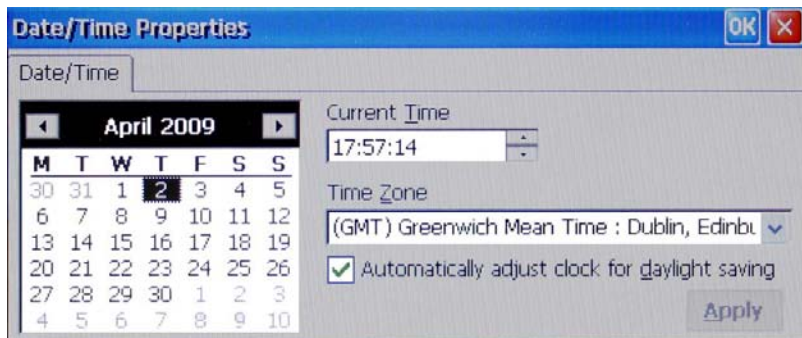
Certificates (optional)

Certificates are used to create trusted relationships between the V-Net and other Servers. To review and modify the system device certificates, click the Start button, click “Settings” and then click “Control Panel”, finally select “Certificates”. The Certificates window will appear as shown below:



Date/Time

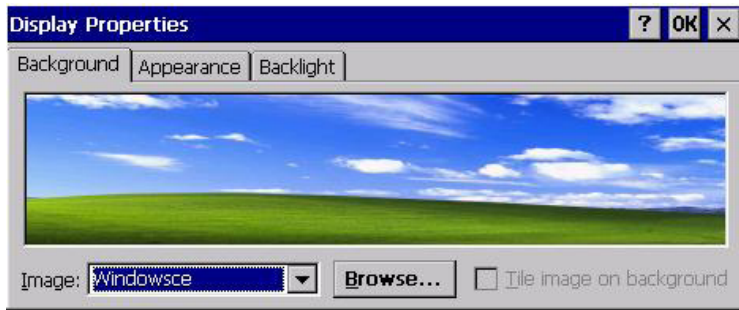
To modify the Date, Time, and Regional time zone information, double click clock in the bottom right hand corner of the Menu bar. The Date/Time Properties window will appear as shown below:



Display (optional)

To change the wallpaper background, default appearance and Backlight settings, move the pointer on to some empty space on the desktop background and press

the right button and select properties, The Display Properties window will appear as shown below:



The background wallpaper can be changed by selecting a different image from the pull down image list or by clicking the Browse button and selecting an image file to use. Appearance and Backlight level can also be set from the relevant tabs within the Display Properties window. Please note that the wallpaper picture should be stored on the “NAND Flash” drive for the setting to be retained after the V-Net has been shut down.

Internet Options

All the options for Internet Explorer can be managed within Internet Options, including the default Start Page, Search Page, Security and Privacy Settings as well as Popup blocking

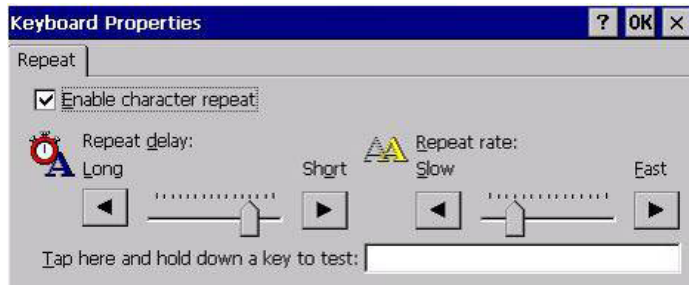
Click the Start button, click “Settings” and then click “Control Panel”, finally select “Internet Options”. The Internet Options window will appear as shown below:



TIPS: Users are recommended the default and not alter the network setting rashly. The ex-works set defaults have been adjusted to the optimum status. Advanced level users can set upon their own conditions.

Keyboard

Double click “Keyboard” icon on the “Control Panel.” This is much the same as the function of “Keyboard” in “Control Panel” of PC. The function is mainly used to adjust the repeat input of soft keyboard and the setting of repeat delay time. A test dialog is available to test your setting.



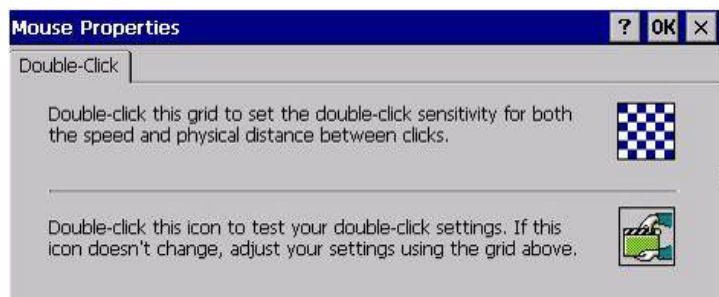
The “enable character repeat” in the interface is the choice box of “enable character repeat”, “Repeat Delay” is for setting repeat rate. The white zone in the bottom is a zone to test the two settings by clicking the zone and pressing a key.

Mouse (optional)

Double click “Mouse” icon on the “Control Panel.”

Double click the grid icon above to set the mouse double-click speed.

Double-click the icon below to test the mouse double-click setting.

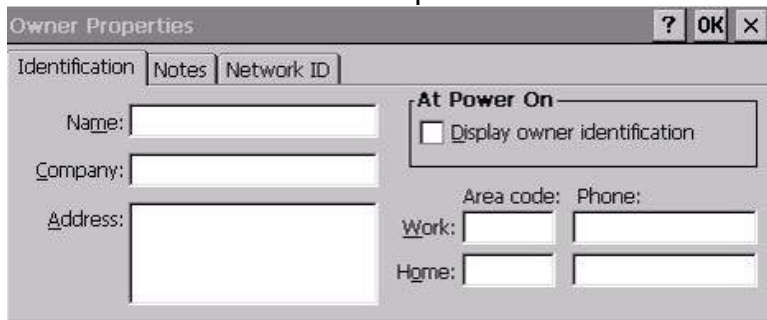


Network dial-up connections

Double click “Network dial-up connections” icon on the “Control Panel.” Double-click and set your setting for the internet, these settings are provided by your internet service provider. Set your TCP IP setting.

Owner

Double click “Owner” icon on the “Control Panel.” Set and display the owner properties information of the current system. Use the notes field to add any additional information not included in the options.



The screenshot shows the "Owner Properties" dialog box with the following fields and options:

- Identification
- Notes
- Network ID
- Name: [text box]
- Company: [text box]
- Address: [text box]
- At Power On
 - Display owner identification
- Area code: [text box]
- Phone: [text box]
- Work: [text box]
- Home: [text box]

IMPORTANT: Windows CE uses this information to gain access to network resources, enter the user name, password and domain provided by your network administrator.

Regional Settings

Double click “Regional Settings” icon on the “Control Panel.” This will display the current regional settings and region where the setting is. “User interface Language” and “Input Language” are default setting of the system.

Installing / Remove Programs

You can add more functionality to your V-Net by installing third party software. A wide variety of commercial software is available for the MS Windows CE 5.0 operating system, ranging from business applications and system utilities, to games and entertainment. The only programs that will run on your V-Net are those designed specifically for MS Windows CE 5.0 running on the ARM processor. You cannot run programs designed for Windows 2000 / XP / Vista or other Windows Mobile platforms like Pocket PC or Windows Mobile 6.

Programs can either be designed for direct installation, in which case you can download and install the program from the Web to your V-Net. Or the software may need the installation files loaded onto your desktop PC for installation via ActiveSync (Windows 2000 / XP) or Windows Mobile Device Center (Vista), as described in the following procedure. The software developer's Web site should provide instructions for installing the program.

If the program includes an installer program (typically named Setup.exe or Install.exe), double-click the installer program on the desktop PC and installation

wizard will begin. Follow the directions on the screen. Once the software has been installed on your desktop computer, the installer will automatically transfer the software to your device when it is connected via the USB cable.

Installed programs can be removed from the V-Net by Clicking the Start button, click “Settings” and then click “Control Panel”, finally select “Remove Programs”.

Programs can also be removed within ActiveSync or by selecting Add/Remove Programs from the Tools menu. Or within Mobile Device Center under Programs and Services, click >>more and select Add/Remove Programs. The Add/Remove Programs window will appear.

PC connection (optional)

Double click “PC Connection” icon on the “Control Panel.” User can Enable/Disable direct connection to the desktop computer. For connection with desktop computer use USB.

TIP: The band rate of the device and computer must be the same.

Memory Management

Some of the systems memory on your V-Net is allocated between storage memory and program memory. You can specify how much of the total memory is used for storage and how much is used for running programs. If you notice that your V-Net is running slowly or that your programs do not run as expected, try increasing program memory. If you need more memory for files and documents, increase storage memory.

To adjust memory allocation click the Start button, click “Settings” and then click “Control Panel”, finally select “System”. The System window will appear as shown below:



Click on the Memory tab, move the slider to the left to increase program memory, or move the slider to the right to increase storage memory.

System

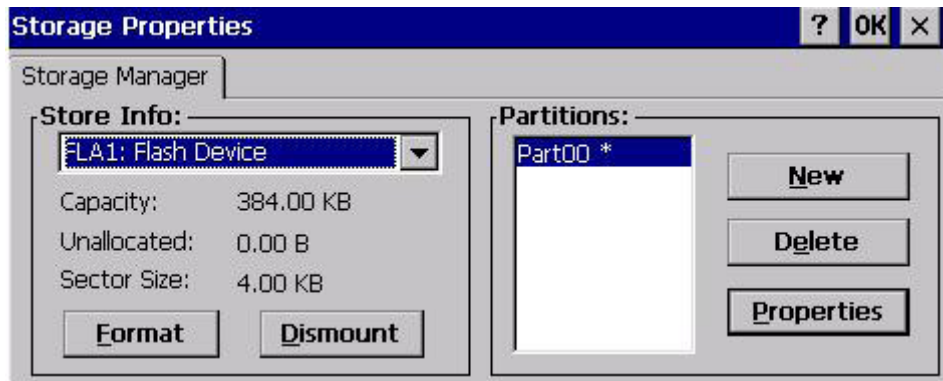
Double click “System” icon on the “Control Panel.” Display the system properties of the system, e.g. process type, memory size, etc. Memory size can be altered here. User can perform the operations following the prompts on the tab.



Storage

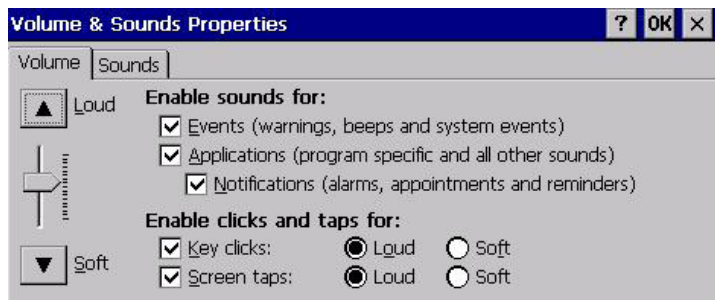
Storage devices can be managed within “Store info”. Select the storage device and the total capacity, unallocated capacity, and sector size, etc, can be checked. The selected device can be formatted and dismantled in this window.

Click the Start button, click “Settings” and then click “Control Panel”, finally select “System”. The Storage Properties windows will appear as shown below:



Volume and Sounds

Double click “Volume and Sounds” icon on the “Control Panel.” Display and set the volume and sound scheme of the current user.



Power

Double click “Power” icon on the “Control Panel.” “Percentage of power left in main batteries” is the display of percentage of power left in the main batteries. “Main batteries were installed on” is the charging time of the batteries. “Total amount of time on main batteries” is the time left that the batteries have of working.

“Power scheme” is the power application scheme. Battery power or AC power!
“Switch state to user idle” is to switch state to user idle. “switch state to system idle” is to switch state to system idle. “Switch state to Suspend” is to switch state to suspend, i.e. auto shutdown time.

NOTE: The planning of integral power of this mini laptop is much the same as the “Power” management in control panel of PC. Advance level users can set upon their specific conditions.

Password

Double click “Password” icon on the “Control Panel.” This is used to protect privacy and data security. Power on password or screen saver password protection can be set. “At power on” is password protection when it is power on. “Screen Saver” is password protection for screen saver.



System Reset

During use the V-Net may encounter a system hang or abnormal operation condition. If this occurs, please use a small pointer to push the reset switch on the bottom of V-Net. This will reset the system, but won't cause any loss to saved data. After resetting the V-Net please power on the machine to start using it.



If any time in the future you should need to dispose of this product please note that: Waste electrical product should not be disposed of with household waste.

Please recycle where facilities exist. Check with your local authority or retailer for recycling advice. (Waste Electrical and Electronic Equipment Directive)

Safety precautions

The following safety precautions will increase the life of the NETBOOK. Follow all precautions and instructions. Except as described in this manual, refer all servicing to qualified personnel. Do not use damaged power cords, accessories, or other peripherals. Do not use strong solvents such as thinners, benzene, or other chemicals on or near the surface.

Disconnect the AC power and remove the battery packs before cleaning. Wipe the NETBOOK using a clean cellulose sponge or chamois cloth dampened with a solution of nonabrasive detergent and a few drops of warm water and remove any extra moisture with a dry cloth.

- DO NOT place on uneven or unstable work surfaces. Seek servicing if the casing has been damaged.
- DO NOT leave the NETBOOK on your lap or any part of the body to prevent discomfort or injury from heat exposure
- DO NOT press or touch the display panel. Do not place together with small items that may scratch or enter the NETBOOK.
- DO NOT place or drop objects on top and do not shove any foreign objects into the NETBOOK.
- DO NOT expose to strong magnetic or electrical fields.
- DO NOT expose to or use near liquids, rain, or moisture.
- DO NOT use the modem during electrical storms.

Visual Land V-NET Netbook

- DO NOT carry or cover a NETBOOK that is powered on with any material that will reduce air circulation such as a carrying bag.
- SAFE TEMP: This NETBOOK should only be used in environments with ambient temperatures between 5C and 40C.
- INPUT RATING: Refer to the rating label on the bottom of the NETBOOK and be sure that your power adapter complies with the rating.

Transportation Precautions

To prepare the NETBOOK for transport, you should turn it OFF and disconnect all external peripherals to prevent damage to the connectors. Therefore, you should not transport the NETBOOK while the power is still ON. Close the display panel and check that it is latched securely in the closed position to protect the keyboard and display panel.

The NETBOOK's surface is easily dulled if not properly cared for. Be careful not to rub or scrape surfaces when transporting your NETBOOK. You can purchase an optional carrying case for protection from dirt, water, shock, and scratches.

Airplane Precautions

Contact your airline if you want to use the NETBOOK on the airplane. Most airlines have restrictions for using electronic devices. Most airlines allow electronic use only between and not during take offs and landings.

There are three main types of airport security devices: X-ray machines (used on items placed on conveyor belts), magnetic detectors (used on people walking through security checks), and magnetic wands (hand-held devices used on people or individual items). You can send your NETBOOK and diskettes through

Visual Land V-NET Netbook

airport X-ray machines. However, it is recommended that you do not send your NETBOOK or diskettes through airport magnetic detectors or expose them to magnetic wands.

The programs that control this product are copyrighted and all rights are reserved. Reproduction, adaptation, or translation of those programs without prior written permission of Visual Land is also prohibited.

Microsoft ActiveSync, Outlook, Windows, Windows CE 5.0, the Windows logo and the MS Windows CE logo are either registered trademarks or trademarks of Microsoft Corporation in the United States and/or other countries.

Microsoft products are licensed to OEMs by Microsoft Licensing, Inc. A wholly owned subsidiary of Microsoft Corporation.

All other brand names and product names used in this document are trade names, service marks, trademarks, or registered trademarks of their respective owners.

WARRANTY

VISUAL LAND INC. warrants this product against defects in material or workmanship for the time periods and as set forth below. Pursuant to this Limited Warranty, VISUAL LAND will, at its option, (i) repair the product using new or refurbished parts or (ii) replace the product with a new or refurbished product. For purposes of this Limited Warranty, "refurbished" means a product or part that has been returned to its original specifications. **In the event of a defect, these are your exclusive remedies.**

Term: For a period of 90 days from the original date of purchase of the product, VISUAL LAND will, at its option, repair or replace with new or refurbished product or parts, any product or parts determined to be defective. This Limited Warranty covers only the hardware components packaged with the Product. It does not cover technical assistance for hardware or software usage and it does not cover any software products whether or not contained in the Product; any such software is provided "AS IS" unless expressly provided for in any enclosed software Limited Warranty. Please refer to the End User License Agreements included with the Product for your rights and obligations with respect to the software.

Instructions: To obtain warranty service, you must deliver the product, freight prepaid, in either its original packaging or packaging affording an equal degree of protection to the VISUAL LAND authorized service facility specified. **It is your responsibility to backup any data, software or other materials you may have stored or preserved on your unit. It is likely that such data, software, or other materials will be lost or reformatted during service and VISUAL LAND will not be responsible for any such damage or loss.** A dated purchase receipt is required. For specific instructions on how to obtain warranty service for your product, product support, online knowledge database, frequently asked questions and free updates via the Internet:

Visit VISUAL LAND's Web Site: <http://www.visual-land.com>

Visual Land V-NET Netbook

Repair/Replacement Warranty: This Limited Warranty shall apply to any repair, replacement part or replacement product for the remainder of the original Limited Warranty. Any parts or product replaced under this Limited Warranty will become the property of VISUAL LAND.

This Limited Warranty only covers product issues caused by defects in material or workmanship during ordinary consumer use; it does not cover product issues caused by any other reason, including but not limited to product issues due to commercial use, acts of God, misuse, limitations of technology, or modification of or to any part of the VISUAL LAND product. This Limited Warranty does not cover VISUAL LAND products sold AS IS or WITH ALL FAULTS or consumables (such as fuses or batteries). This Limited Warranty is invalid if the factory-applied serial number has been altered or removed from the product. This Limited Warranty is valid only in the country of purchase, the United States of America.

LIMITATION ON DAMAGES: VISUAL LAND SHALL NOT BE LIABLE FOR ANY INCIDENTAL OR CONSEQUENTIAL DAMAGES FOR BREACH OF ANY EXPRESS OR IMPLIED WARRANTY OR CONDITION ON THIS PRODUCT.

DURATION OF IMPLIED WARRANTIES: EXCEPT TO THE EXTENT PROHIBITED BY APPLICABLE LAW, ANY IMPLIED WARRANTY OR CONDITION OF MERCHANTABILITY OR FITNESS FOR A PARTICULAR PURPOSE ON THIS PRODUCT IS LIMITED IN DURATION TO THE DURATION OF THIS WARRANTY.

Some states or jurisdictions do not allow the exclusion or limitation of incidental or consequential damages, or allow limitations on how long an implied warranty lasts, so the above limitations or exclusions may not apply to you. This Limited Warranty gives you specific legal rights and you may have other rights which vary from state to state or jurisdiction to jurisdiction.

All information is subject to change without notice.

V·NET

Mini Notebook Computer



VISUAL LAND

Bring the World Home